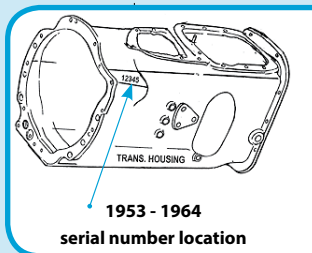
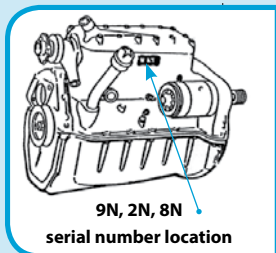


Ford: Beginning serial numbers



9N, 2N, 8N serial and engine numbers are incorporated on left hand side of engine block.

Model 9N

1939..... 1
1940..... 10234
1941..... 45976
1942..... 89888
1943..... 105412

Model 2N

1942..... 99003
1943..... 105375
1944..... 126538
1945..... 169982
1946..... 198731
1947..... 258504

Model 8N

1947..... 1
1948..... 37908
1949..... 141370
1950..... 245637
1951..... 343593
1952..... 442035

Late Model NAA, 600, 700, 800, 900 serial number is located on left hand side of transmission case at point of joining with starting motor.

Model NAA

1953..... 1
1954..... 77475

Series 600, 700, 800, 900

1954..... 1
1955..... 10615
1956..... 77271
1957..... 116368

Series 601, 701, 801, 901

1957..... 1001
1958..... 11977
1959..... 58312

1960..... 105943
1961..... 131427
1962..... 155531

Series 2000 (4-cyl.), 4000 (4-cyl.), 6000

1962..... 1001
1963..... 11948
1964..... 38931

2000, 3000, 5000, 6600, 7000 serial and model numbers are stamped on the upper right front corner of the transmission. Engine serial number is stamped on left or right pan rail of block.

6000 serial number is located on left hand front side of trans housing.

8000, 9000 ID is located inside the radiator filler cap access door.

Series 2000 (3-cyl.) - 9000 US Production

1965..... C100000
1966..... C124200
1967..... C161300
1968..... C190200
1969..... C226000
1970..... C257600
1971..... C292100
1972..... C327200
1973..... C367300
1974..... C405200
1975..... C450700

Fordson

1917..... 1
1918..... 255
1919..... 34422
1920..... 91712
1921..... 162667
1922..... 199448
1923..... 268433

1924..... 370331
1925..... 453341
1926..... 557509
1927..... 645611
1928..... 739581
1929..... 747584
1930..... 757265

Dexta serial number stamped on left hand clutch housing. The engine number is stamped on left hand side of block.

Fordson Dexta

1958..... 16066
1959..... 22427
1960..... 45216
1961..... 72003

Fordson Super Dexta

1961..... 09A-312001-M
1962..... 09B-070000-M
1963..... 09C-731454-A
1964..... 09D-900000-A

Fordson Major Diesel, Fordson Power Major serial and engine numbers are stamped on left hand flywheel housing or right side of engine block.

Fordson Major diesel series

1953..... 1247381
1954..... 1276857
1955..... 1322525
1956..... 1371418
1957..... 1412409
1958..... 1458381

Fordson Power Major series

1958..... 1481091
1959..... 1494448
1960..... 1538065
1961..... 1583906

Fordson Super Major series

1961..... 08A-300001M
1962..... 08B-740000-A
1963..... 08C-781370-A
1964..... 08D-900000-A